

हमारा विश्वास... हर एक विद्यार्थी है खास

**JEE  
MAIN  
Sept.  
2020**

**QUESTION PAPER WITH SOLUTION**

**PHYSICS \_ 3 Sep. \_ SHIFT - 1**

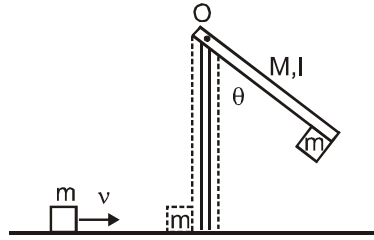


**MOTION™**

H.O. : 394, Rajeev Gandhi Nagar, Kota  
www.motion.ac.in | ✉: info@motion.ac.in

हमारा विश्वास... हर एक विद्यार्थी है खास

1. A block of mass  $m = 1$  kg slides with velocity  $v = 6$  m/s on a frictionless horizontal surface and collides with a uniform vertical rod and sticks to it as shown. The rod is pivoted about O and swings as a result of the collision making angle  $\theta$  before momentarily coming to rest. If the rod has mass  $M = 2$  kg, and length  $l = 1$  m, the value of  $\theta$  is approximately :  
(take  $g = 10$  m/s<sup>2</sup>)



- Sol. (1) 49° (2) 63° (3) 69° (4) 55°

$$mv\ell = I\omega$$

$$\omega = \frac{mv\ell}{I}$$

$$\frac{1}{2}I\omega^2 = (m+M)g\ell_{\text{com}}(1 - \cos\theta)$$

$$\frac{1}{2} \frac{(mv\ell)^2}{I} = (m+M)g\ell_{\text{com}}(1 - \cos\theta)$$

$$I = \left( \frac{M\ell^2}{3} + m\ell^2 \right)$$

$$I = \left( \frac{2}{3} + 1 \right) = \frac{5}{3}$$

$$\frac{36 \times 3}{2 \times 5} = \frac{3 \times 10 \times 2}{3} (1 - \cos\theta)$$

$$\frac{27}{50} = (1 - \cos\theta)$$

$$\cos\theta = 1 - \frac{27}{50}$$

$$\cos\theta = \frac{23}{50}$$

$$\theta = 63^\circ$$

**CRASH COURSE**  
FOR JEE ADVANCED 2020

FREE Online Lectures Available on YouTube

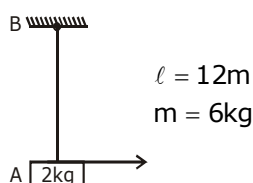
Go Premium at ₹ 1100

◆ Doubt Support ◆ Advanced Level Test Access  
◆ Live Test Paper Discussion ◆ Final Revision Exercises

Start Date: **07 Sept. 2020**

2. A uniform thin rope of length 12 m and mass 6 kg hangs vertically from a rigid support and a block of mass 2 kg is attached to its free end. A transverse short wavetrain of wavelength 6 cm is produced at the lower end of the rope. What is the wavelength of the wavetrain (in cm) when it reaches the top of the rope ?  
 (1) 12 (2) 3 (3) 9 (4) 6

Sol. 1



$$\mu = \frac{6}{12} = \frac{1}{2} \text{ kg/m}$$

$$A \rightarrow V = \sqrt{\frac{T}{\mu}} = f\lambda$$

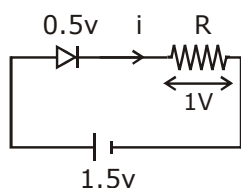
$$B \rightarrow \sqrt{\frac{T'}{\mu}} = f\lambda'$$

$$\sqrt{\frac{T}{T'}} = \frac{\lambda}{\lambda'}$$

$$\sqrt{\frac{20}{80}} = \frac{6}{\lambda'} = \lambda' = 12$$

3. When a diode is forward biased, it has a voltage drop of 0.5 V. The safe limit of current through the diode is 10 mA. If a battery of emf 1.5 V is used in the circuit, the value of minimum resistance to be connected in series with the diode so that the current does not exceed the safe limit is :  
 (1) 300  $\Omega$  (2) 200  $\Omega$  (3) 50  $\Omega$  (4) 100  $\Omega$

Sol. 4



$$V = iR$$

$$R = \frac{V}{i} = \frac{1}{10\text{mA}}$$

$$= \frac{1000}{10} = 100\Omega$$

हमारा विश्वास... हर एक विद्यार्थी है खास

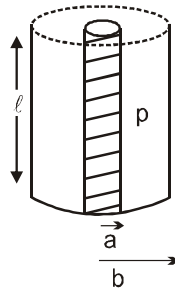
4. Using screw gauge of pitch 0.1 cm and 50 divisions on its circular scale, the thickness of an object is measured. It should correctly be recorded as :  
 (1) 2.125 cm      (2) 2.124 cm      (3) 2.123 cm      (4) 2.121 cm

Sol. 2

$$\text{Least count} = \frac{0.1}{50} = \frac{1}{500} = 0.2 \times 10^{-2} = 0.002$$

when we multiply by division no.'s  
 it must be even because L.C. is 0.002.

5. Model a torch battery of length  $\ell$  to be made up of a thin cylindrical bar of radius 'a' and a concentric thin cylindrical shell of radius 'b' filled in between with an electrolyte of resistivity  $\rho$  (see figure). If the battery is connected to a resistance of value R, the maximum joule heating in R will take place for :



(1)  $R = \frac{\rho}{2\pi l} \left(\frac{b}{a}\right)$       (2)  $R = \frac{2\rho}{\pi l} \ln\left(\frac{b}{a}\right)$       (3)  $R = \frac{\rho}{\pi l} \ln\left(\frac{b}{a}\right)$       (4)  $\frac{\rho}{2\pi l} \ln\left(\frac{b}{a}\right)$

Sol. 4

$$dR = \rho \frac{dr}{2\pi r l}$$

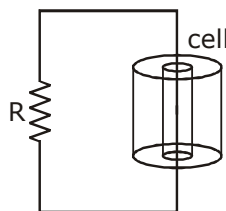
$$\int dR = \frac{\rho}{2\pi l} \int_a^b \frac{1}{r} dr$$

$$R = \frac{\rho}{2\pi l} [\ln(r)]_a^b$$

$$R = \frac{\rho}{2\pi l} \ln\left(\frac{b}{a}\right)$$

$$r = R$$

For Max heat transfer



**CRASH COURSE**  
**FOR JEE ADVANCED 2020**

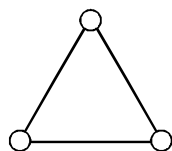
FREE Online Lectures Available on YouTube

Go Premium at ₹ 1100

◆ Doubt Support ◆ Advanced Level Test Access  
 ◆ Live Test Paper Discussion ◆ Final Revision Exercises

Start Date: **07 Sept. 2020**

6. Consider a gas of triatomic molecules. The molecules are assumed to be triangular and made of massless rigid rods whose vertices are occupied by atoms. The internal energy of a mole of the gas at temperature T is :



- (1)  $\frac{3}{2} RT$                       (2)  $3RT$                       (3)  $\frac{5}{2} RT$                       (4)  $\frac{9}{2} RT$

**Sol. 2**

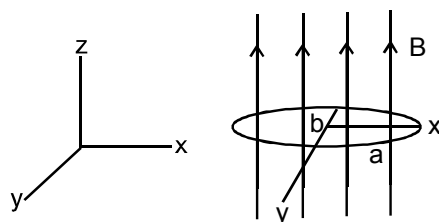
$$U = \frac{f}{2} nRT$$

$$U = \frac{6}{2} nRT$$

$$U = 3nRT \quad n = 1$$

$$U = 3RT$$

7. An elliptical loop having resistance R, of semi major axis a, and semi minor axis b is placed in magnetic field as shown in the figure. If the loop is rotated about the x-axis with angular frequency  $\omega$ , the average power loss in the loop due to Joule heating is :



- (1)  $\frac{\pi ab B \omega}{R}$                       (2)  $\frac{\pi^2 a^2 b^2 B^2 \omega^2}{R}$                       (3)  $\frac{\pi^2 a^2 b^2 B^2 \omega^2}{2R}$                       (4) Zero

**Sol. 3**

$$\phi = BA \cos \omega t$$

$$\epsilon = \frac{d\phi}{dt} = BA \omega \sin \omega t$$

$$\epsilon = B \pi a b \omega \sin \omega t$$

$$\epsilon_0 = B \pi a b \omega$$

$$P = \frac{\epsilon^2}{R} = \frac{B^2 \pi^2 a^2 b^2 \omega^2}{R} (\sin^2 \omega t)$$

$$P_{av} = \frac{B^2 \pi^2 a^2 b^2 \omega^2}{2R}$$

**CRASH COURSE**  
FOR JEE ADVANCED 2020

FREE Online Lectures Available on YouTube

Go Premium at ₹ 1100

- ◆ Doubt Support
- ◆ Advanced Level Test Access
- ◆ Live Test Paper Discussion
- ◆ Final Revision Exercises

Start Date: **07 Sept. 2020**

हमारा विश्वास... हर एक विद्यार्थी है खास

8. A balloon filled with helium (32° C and 1.7 atm.) bursts. Immediately afterwards the expansion of helium can be considered as :

(1) reversible isothermal (2) irreversible isothermal  
(3) reversible adiabatic (4) irreversible adiabatic

Sol. 4

irreversible adiabatic → Because Energy can not be restored.

9. When the wavelength of radiation falling on a metal is changed from 500 nm to 200 nm, the maximum kinetic energy of the photoelectrons becomes three times larger. The work function of the metal is close to :

(1) 1.02 eV (2) 0.61 eV (3) 0.52 eV (4) 0.81 eV

Sol. 2

$$KE_{\max} = \frac{hc}{\lambda_1} - \phi$$

$$3KE_{\max} = \frac{hc}{\lambda_2} - \phi$$

$$3\left(\frac{hc}{\lambda_1} - \phi\right) = \frac{hc}{\lambda_2} - \phi$$

$$\frac{3hc}{\lambda_1} - \frac{hc}{\lambda_2} = 2\phi$$

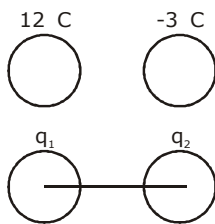
$$\frac{3 \times 1240}{500} - \frac{1240}{200} = 2\phi$$

$$\phi = 0.6$$

10. Two isolated conducting spheres  $S_1$  and  $S_2$  of radius  $\frac{2}{3}R$  and  $\frac{1}{3}R$  have  $12 \mu\text{C}$  and  $-3\mu\text{C}$  charges, respectively, and are at a large distance from each other. They are now connected by a conducting wire. A long time after this is done the charges on  $S_1$  and  $S_2$  are respectively :

(1)  $6 \mu\text{C}$  and  $3 \mu\text{C}$  (2)  $4.5 \mu\text{C}$  on both  
(3)  $+4.5 \mu\text{C}$  and  $-4.5 \mu\text{C}$  (4)  $3 \mu\text{C}$  and  $6 \mu\text{C}$

Sol. 1



$$q_1 + q_2 = 9\mu\text{C} \quad \dots(1)$$

**CRASH COURSE**  
FOR JEE ADVANCED 2020

FREE Online Lectures Available on YouTube

Go Premium at ₹ 1100

◆ Doubt Support ◆ Advanced Level Test Access  
◆ Live Test Paper Discussion ◆ Final Revision Exercises

Start Date: **07 Sept. 2020**

$$\frac{Kq_1}{\frac{2}{3}R} = \frac{Kq_2}{\frac{1}{3}R}$$

$$q_1 = 2q_2$$

$$3q_2 = 9\mu\text{C}$$

$$q_2 = 3\mu\text{C}$$

$$q_1 = 6\mu\text{C}$$

- 11.** In a radioactive material, fraction of active material remaining after time  $t$  is  $9/16$ . The fraction that was remaining after  $t/2$  is :

(1)  $\frac{3}{4}$                       (2)  $\frac{7}{8}$                       (3)  $\frac{4}{5}$                       (4)  $\frac{3}{5}$

**Sol. 1**

$$N = N_0 e^{-\lambda t}$$

$$\left(\frac{N}{N_0}\right) = e^{-\lambda t}$$

$$\frac{9}{16} = e^{-\lambda t}$$

$$\frac{N}{N_0} = e^{-\lambda t/2}$$

$$\frac{N}{N_0} = \left(\frac{9}{16}\right)^{\frac{1}{2}} = \frac{3}{4}$$

- 12.** Moment of inertia of a cylinder of mass  $M$ , length  $L$  and radius  $R$  about an axis passing through its centre and perpendicular to the axis of the cylinder is  $I = M \left( \frac{R^2}{4} + \frac{L^2}{12} \right)$ . If such a cylinder is to be made for a given mass of a material, the ratio  $L/R$  for it to have minimum possible  $I$  is :

(1)  $\frac{2}{3}$                       (2)  $\frac{3}{2}$                       (3)  $\sqrt{\frac{2}{3}}$                       (4)  $\sqrt{\frac{3}{2}}$

**Sol. 4**

$$M = d.V$$

$$M = d\pi R^2 L$$

$$I = M \left( \frac{R^2}{4} + \frac{L^2}{12} \right)$$

$$I = M \left( \frac{M}{4d\pi L} + \frac{L^2}{12} \right)$$

**CRASH COURSE**  
FOR JEE ADVANCED 2020

FREE Online Lectures Available on YouTube

Go Premium at ₹ 1100

◆ Doubt Support ◆ Advanced Level Test Access  
◆ Live Test Paper Discussion ◆ Final Revision Exercises

Start Date: **07 Sept. 2020**

हमारा विश्वास... हर एक विद्यार्थी है खास

$$I = \left( \frac{M^2}{4d\pi L} + \frac{ML^2}{12} \right)$$

$$\frac{dI}{dL} = \frac{M^2}{4d\pi} \left( \frac{-1}{L^2} \right) + \frac{2LM}{12} = 0$$

$$\frac{M^2}{4d\pi L^2} = \frac{2LM}{12}$$

$$\frac{d\pi R^2 L}{4d\pi L^2} = \frac{L}{6}$$

$$\frac{R^2}{L^2} = \frac{2}{3}$$

$$\frac{R}{L} = \sqrt{\frac{2}{3}} \Rightarrow \frac{L}{R} = \sqrt{\frac{3}{2}}$$

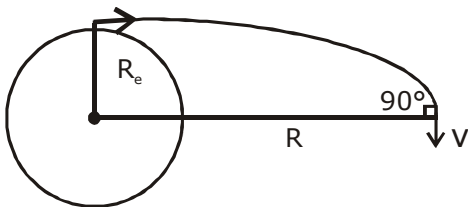
- 13.** A satellite is moving in a low nearly circular orbit around the earth. Its radius is roughly equal to that of the earth's radius  $R_e$ . By firing rockets attached to it, its speed is instantaneously increased

in the direction of its motion so that it become  $\sqrt{\frac{3}{2}}$  times larger. Due to this the farthest distance from the centre of the earth that the satellite reaches is  $R$ . Value of  $R$  is :

- (1)  $2R_e$                       (2)  $3R_e$                       (3)  $4R_e$                       (4)  $2.5 R_e$

**Sol.** **2**

$$V_0 = \sqrt{\frac{GM}{R_e}} \times \sqrt{\frac{3}{2}}$$



$$mV_0 R_e = mVR$$

$$\sqrt{\frac{3}{2}} \sqrt{\frac{GM}{R_e}} R_e = VR$$

$$-\frac{GMm}{R_e} + \frac{1}{2}mv_0^2 = -\frac{GMm}{R} + \frac{1}{2}mv^2$$

$$-\frac{GMm}{R_e} + \frac{1}{2}m \frac{3}{2} \frac{GM}{R_e} = -\frac{GMm}{R} + \frac{1}{2}m \frac{3}{2} \frac{GM R_e^2}{R^2}$$

**CRASH COURSE**  
FOR JEE ADVANCED 2020

FREE Online Lectures Available on YouTube

Go Premium at ₹ 1100

◆ Doubt Support ◆ Advanced Level Test Access  
◆ Live Test Paper Discussion ◆ Final Revision Exercises

Start Date: **07 Sept. 2020**



$$-\frac{1}{R_e} + \frac{3}{4R_e} = -\frac{1}{R} + \frac{3R_e}{4R^2}$$

$$-\frac{1}{4R_e} = -\frac{1}{R} + \frac{3R_e}{4R^2}$$

By further calculating

$$R = 3R_e$$

- 14.** Pressure inside two soap bubbles are 1.01 and 1.02 atmosphere, respectively. The ratio of their volumes is :

(1) 4 : 1                      (2) 2 : 1                      (3) 0.8 : 1                      (4) 8 : 1

**Sol. 4**

$$P_{in} = P_0 + \frac{4T}{R_1}$$

$$1.01 = 1 + \frac{4T}{R_1}$$

$$0.01 = \frac{4T}{R_1}$$

$$0.02 = \frac{4T}{R_2}$$

$$\frac{1}{2} = \frac{R_2}{R_1}$$

$$\frac{V_1}{V_2} = \frac{8}{1}$$

- 15.** In a Young's double slit experiment, light of 500 nm is used to produce an interference pattern. When the distance between the slits is 0.05 mm, the angular width (in degree) of the fringes formed on the distance screen is close to :

(1) 0.17°                      (2) 0.07°                      (3) 0.57°                      (4) 1.7°

**Sol. 3**

$$B = \frac{\lambda D}{d}$$

$$\theta = \frac{\beta}{D} = \left( \frac{\lambda}{d} \right)$$

$$\theta = \frac{500 \times 10^{-9}}{(0.05 \times 10^{-3})}$$

$$\theta = \frac{5 \times 10^{-2}}{5} = \frac{5}{100 \times 5}$$

$$\theta^\circ = \frac{5}{100} \times \frac{180}{5 \times \pi}$$

$$\theta^\circ = 0.57^\circ$$

**CRASH COURSE**  
FOR JEE ADVANCED 2020

FREE Online Lectures Available on YouTube

Go Premium at ₹ 1100

◆ Doubt Support ◆ Advanced Level Test Access  
◆ Live Test Paper Discussion ◆ Final Revision Exercises

Start Date: **07 Sept. 2020**

हमारा विश्वास... हर एक विद्यार्थी है खास

- 16.** A 750 Hz, 20 V (rms) source is connected to a resistance of  $100 \Omega$ , an inductance of 0.1803 H and a capacitance of  $10 \mu\text{F}$  all in series. The time in which the resistance (heat capacity  $2 \text{ J}/^\circ\text{C}$ ) will get heated by  $10^\circ\text{C}$ . (assume no loss of heat to the surroundings) is close to :
- (1) 245 s                      (2) 365 s                      (3) 418 s                      (4) 348 s

**Sol. 4**

$$f = 750\text{Hz}, V_{\text{rms}} = 20\text{V}, R = 100\Omega, L = 0.1803\text{H}$$

$$C = 10\mu\text{f}$$

$$S = 2\text{J} / ^\circ\text{C}$$

$$Z = \sqrt{R^2 + (X_L - X_C)^2} = \sqrt{R^2 + \left(2\pi fL - \frac{1}{2\pi fC}\right)^2}$$

$$|Z| = \sqrt{(100)^2 + \left(2 \times 3.14 \times 750 \times 0.1803 - \frac{1}{2 \times 3.14 \times 750 \times 10^{-5}}\right)^2}$$

$$|Z| = 834\Omega$$

In AC

$$P = V_{\text{rms}} i_{\text{rms}} \cos \phi$$

$$P = \left( V_{\text{rms}} \cdot \frac{V_{\text{rms}}}{|Z|} \cdot \frac{R}{|Z|} \right)$$

$$P = \left( \frac{V_{\text{rms}}}{|Z|} \right)^2 R$$

$$P = \left( \frac{20}{834} \right)^2 \times 100 = 0.0575\text{J} / \text{S}$$

$$P \times t = S \Delta \theta$$

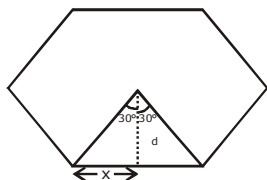
$$t = \frac{2(10)}{0.0575}$$

$$t = 348 \text{ sec}$$

- 17.** Magnitude of magnetic field (in SI units) at the centre of a hexagonal shape coil of side 10 cm, 50 turns and carrying current I (Ampere) in units of  $\frac{\mu_0 I}{\pi}$  is :

- (1)  $250\sqrt{3}$                       (2)  $50\sqrt{3}$                       (3)  $500\sqrt{3}$                       (4)  $5\sqrt{3}$

**Sol. 3**



$$\tan 30 = \frac{x}{d}$$

$$d = \frac{x}{\tan 30}$$

$$d = \frac{5 \times 10^{-2}}{\frac{1}{\sqrt{3}}}$$

$$d = 5\sqrt{3} \times 10^{-2}$$

**CRASH COURSE**  
FOR JEE ADVANCED 2020

FREE Online Lectures Available on YouTube

Go Premium at ₹ 1100

◆ Doubt Support ◆ Advanced Level Test Access  
◆ Live Test Paper Discussion ◆ Final Revision Exercises

Start Date: **07 Sept. 2020**

$$B = \frac{6 \times \mu_0 I N}{4\pi d} (\sin \theta_1 + \sin \theta_2)$$

$$B = \frac{\mu_0 I}{4\pi} \times \frac{50 \times 6}{5\sqrt{3} \times 10^{-2}} (\sin 30 + \sin 30)$$

$$B = \frac{10 \times 6 \times 100}{\sqrt{3} \times 4} \left( \frac{\mu_0 I}{\pi} \right)$$

$$B = 500\sqrt{3}$$

18. The magnetic field of a plane electromagnetic wave is

$$\vec{B} = 3 \times 10^{-8} \sin[200\pi(y + ct)] \hat{i} \text{ T}$$

where  $c = 3 \times 10^8 \text{ ms}^{-1}$  is the speed of light.

The corresponding electric field is :

(1)  $\vec{E} = -9 \sin [200\pi(y + ct)] \hat{k} \text{ V/m}$       (2)  $\vec{E} = 9 \sin [200\pi(y + ct)] \hat{k} \text{ V/m}$

(3)  $\vec{E} = -10^{-6} \sin [200\pi(y + ct)] \hat{k} \text{ V/m}$       (4)  $\vec{E} = 3 \times 10^{-8} \sin [200\pi(y + ct)] \hat{k} \text{ V/m}$

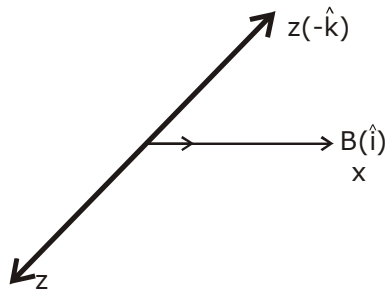
Sol. 1

$$E = BC$$

$$E = 3 \times 10^{-8} \times 3 \times 10^8$$

$$E = 9$$

$$\vec{S} = \frac{\vec{E} \times \vec{B}}{r}$$



$$E = 9 \sin [200\pi(y + ct)] (-\hat{k})$$

19. A charged particle carrying charge  $1 \mu\text{C}$  is moving with velocity  $(2\hat{i} + 3\hat{j} + 4\hat{k}) \text{ ms}^{-1}$ . If an external magnetic field of  $(5\hat{i} + 3\hat{j} - 6\hat{k}) \times 10^{-3} \text{ T}$  exists in the region where the particle is moving then the force on the particle is  $\vec{F} \times 10^{-9} \text{ N}$ . The vector  $\vec{F}$  is :

(1)  $-0.30\hat{i} + 0.32\hat{j} - 0.09\hat{k}$

(2)  $-3.0\hat{i} + 3.2\hat{j} - 0.9\hat{k}$

(3)  $-30\hat{i} + 32\hat{j} - 9\hat{k}$

(4)  $-300\hat{i} + 320\hat{j} - 90\hat{k}$

**CRASH COURSE**  
FOR JEE ADVANCED 2020

FREE Online Lectures Available on YouTube

Go Premium at ₹ 1100

◆ Doubt Support ◆ Advanced Level Test Access  
◆ Live Test Paper Discussion ◆ Final Revision Exercises

Start Date: **07 Sept. 2020**

हमारा विश्वास... हर एक विद्यार्थी है खास

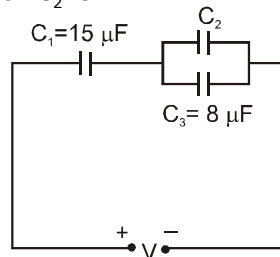
**Sol. 3**

$$\vec{F} = q(\vec{V} \times \vec{B})$$

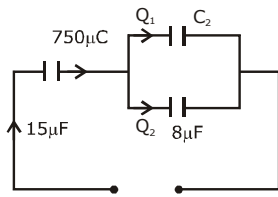
$$\vec{F} = 10^{-6}(2\hat{i} + 3\hat{j} + 4\hat{k}) \times (5\hat{i} + 3\hat{j} - 6\hat{k}) \times 10^{-3}$$

$$\vec{F} = (-30\hat{i} + 32\hat{j} - 9\hat{k}) \times 10^{-9}$$

**20.** In the circuit shown in the figure, the total charge is  $750 \mu\text{C}$  and the voltage across capacitor  $C_2$  is  $20 \text{ V}$ . Then the charge on capacitor  $C_2$  is :



**Sol. 3** (1)  $650 \mu\text{C}$  (2)  $450 \mu\text{C}$  (3)  $590 \mu\text{C}$  (4)  $160 \mu\text{C}$



$$Q_2 = CV = 8\mu\text{f} \cdot 20 = 160\mu\text{C}$$

$$Q_1 = 750 - 160 = 590\mu\text{C}$$

**21.** A person of  $80 \text{ kg}$  mass is standing on the rim of a circular platform of mass  $200 \text{ kg}$  rotating about its axis at  $5 \text{ revolutions per minute (rpm)}$ . The person now starts moving towards the centre of the platform. What will be the rotational speed (in rpm) of the platform when the person reaches its centre \_\_\_\_\_.

**Sol. 9**

$$I_1\omega_1 = I_2\omega_2$$

$$\left(\frac{MR^2}{2} + mR^2\right)\omega_1 = \omega_2 \frac{MR^2}{2}$$

$$\left(1 + \frac{2mR^2}{MR^2}\right)\omega_1 = \omega_2$$

$$\left(1 + \frac{2 \times 80}{200}\right)\omega_1 = \omega_2$$

$$\omega_2 = \omega_1 \cdot 1.8$$

$$2\pi f_2 = 2\pi f_1 \times 1.8$$

$$f_2 = 5 \times 1.8 = 9$$

**CRASH COURSE**  
FOR JEE ADVANCED 2020

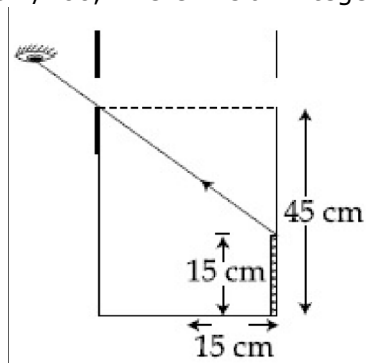
FREE Online Lectures Available on YouTube

Go Premium at ₹ 1100

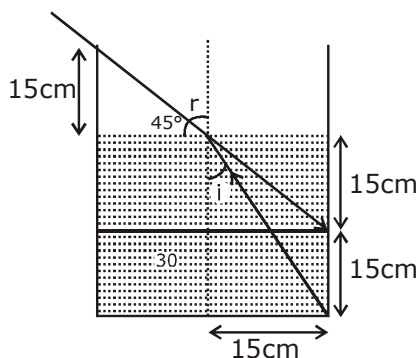
◆ Doubt Support ◆ Advanced Level Test Access  
◆ Live Test Paper Discussion ◆ Final Revision Exercises

Start Date: **07 Sept. 2020**

22. An observer can see through a small hole on the side of a jar (radius 15 cm) at a point at height of 15 cm from the bottom (see figure). The hole is at a height of 45 cm. When the jar is filled with a liquid up to a height of 30 cm the same observer can see the edge at the bottom of the jar. If the refractive index of the liquid is  $N/100$ , where  $N$  is an integer, the value of  $N$  is \_\_\_\_\_.



Sol. 1.58



$$\mu \sin i = 1 \sin 45$$

$$\mu \frac{15}{\sqrt{1125}} = \frac{1}{\sqrt{2}}$$

$$\mu = \frac{\sqrt{1125}}{15\sqrt{2}}$$

$$\mu = \sqrt{\frac{1125}{450}}$$

$$\mu = 1.58$$

$$\mu = \frac{N}{100} = 1.58$$

$$\Rightarrow N = 158$$

**CRASH COURSE**  
FOR JEE ADVANCED 2020

FREE Online Lectures Available on YouTube

Go Premium at ₹ 1100

◆ Doubt Support ◆ Advanced Level Test Access  
◆ Live Test Paper Discussion ◆ Final Revision Exercises

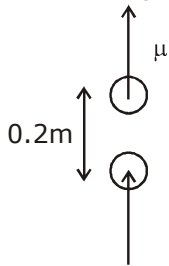
Start Date: **07 Sept. 2020**

हमारा विश्वास... हर एक विद्यार्थी है खास

- 23.** A cricket ball of mass 0.15 kg is thrown vertically up by a bowling machine so that it rises to a maximum height of 20 m after leaving the machine. If the part pushing the ball applies a constant force  $F$  on the ball and moves horizontally a distance of 0.2 m while launching the ball, the value of  $F$  (in N) is ( $g = 10 \text{ ms}^{-2}$ )\_\_\_\_\_.

**Sol. 150**

$$m = 0.15 \text{ kg}$$



$$\mu = \sqrt{2gh}$$

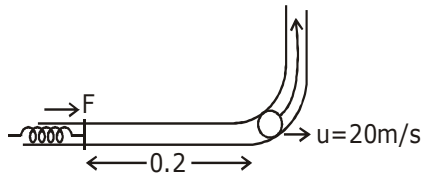
$$\mu = \sqrt{2 \times 10 \times 20}$$

$$\mu = 20 \text{ m / sec}$$

$$Fd = \frac{1}{2}mv^2$$

$$F \times 0.2 = \frac{1}{2} \times \frac{0.15}{100} \times 400$$

$$F = \frac{15 \times 200 \times 10}{100 \times 0.2} = 150$$

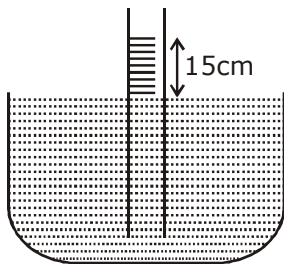


- 24.** When a long glass capillary tube of radius 0.015 cm is dipped in a liquid, the liquid rises to a height of 15 cm within it. If the contact angle between the liquid and glass is close to  $0^\circ$ , the surface tension of the liquid, in milliNewton  $\text{m}^{-1}$ , is

[ $\rho_{\text{(liquid)}} = 900 \text{ kgm}^{-3}$ ,  $g = 10 \text{ ms}^{-2}$ ] (Give answer in closest integer)\_\_\_\_\_.

**Sol. 101**

$$r = 0.015$$



$$h = \frac{2T}{\rho gr}$$

$$T = \frac{h\rho gr}{2}$$

$$T = \frac{15 \times 10^{-2} \times 900 \times 10 \times 0.015 \times 10^{-2}}{2 \times 10^3}$$

$$T = 101 \text{ milli N/m}$$

**CRASH COURSE**  
FOR JEE ADVANCED 2020

FREE Online Lectures Available on YouTube

Go Premium at ₹ 1100

◆ Doubt Support ◆ Advanced Level Test Access  
◆ Live Test Paper Discussion ◆ Final Revision Exercises

Start Date: **07 Sept. 2020**

- 25.** A bakelite beaker has volume capacity of 500 cc at 30°C. When it is partially filled with  $V_m$  volume (at 30°C) of mercury, it is found that the unfilled volume of the beaker remains constant as temperature is varied. If  $\gamma_{(\text{beaker})} = 6 \times 10^{-6} \text{ }^\circ\text{C}^{-1}$  and  $\gamma_{(\text{mercury})} = 1.5 \times 10^{-4} \text{ }^\circ\text{C}^{-1}$ , where  $\gamma$  is the coefficient of volume expansion, then  $V_m$  (in cc) is close to \_\_\_\_\_.

**Sol. 20**

$$\Delta V = v\gamma\Delta T$$

$$V_1\gamma_1 = V_2\gamma_2$$

$$500\text{cc} \times 6 \times 10^{-6} = V_m \times 1.5 \times 10^{-4}$$

$$V_m = \frac{500 \times 6 \times 10^{-6}}{1.5 \times 10^{-4}} = \frac{30}{1.5}$$

$$V_m = 20\text{cc}$$

**CRASH COURSE**  
FOR JEE ADVANCED 2020

FREE Online Lectures Available on YouTube

Go Premium at ₹ 1100

◆ Doubt Support ◆ Advanced Level Test Access  
◆ Live Test Paper Discussion ◆ Final Revision Exercises

Start Date: **07 Sept. 2020**

जब इन्होंने पूरा किया अपना सपना  
तो आप भी पा सकते है लक्ष्य अपना

Admission  
**OPEN**

## JEE MAIN RESULT 2019



**Nitin Gupta**

Marks  
**335**  
13th (2019)

Marks  
**149**  
12th (2018)



**Shiv Modi**

Marks  
**318**  
13th (2019)

Marks  
**153**  
12th (2018)



**Ritik Bansal**

Marks  
**308**  
13th (2019)

Marks  
**218**  
12th (2018)



**Shubham Kumar**

Marks  
**300**  
13th (2019)

Marks  
**153**  
12th (2018)

### KOTA'S PIONEER IN DIGITAL EDUCATION

**1,95,00,000+** viewers | **72,67,900+** viewing hours | **2,11,000+** Subscribers

SERVICES	SILVER	GOLD	PLATINUM
Classroom Lectures (VOD)			
Live interaction	NA		
Doubt Support	NA		
Academic & Technical Support	NA		
Complete access to all content	NA		
Classroom Study Material	NA		
Exercise Sheets	NA		
Recorded Video Solutions	NA		
Online Test Series	NA		
Revision Material	NA		
<b>Upgrade to Regular Classroom program</b>	<b>Chargeable</b>	<b>Chargeable</b>	<b>Free</b>
Physical Classroom	NA	NA	
Computer Based Test	NA	NA	
Student Performance Report	NA	NA	
Workshop & Camp	NA	NA	
Motion Solution Lab- Supervised learning and instant doubt clearance	NA	NA	
Personalised guidance and mentoring	NA	NA	

#### FEE STRUCTURE

CLASS	SILVER	GOLD	PLATINUM
7th/8th	FREE	₹ 12,000	₹ 35,000
9th/10th	FREE	₹ 15,000	₹ 40,000
11th	FREE	₹ 29,999	₹ 49,999
12th	FREE	₹ 39,999	₹ 54,999
12th Pass	FREE	₹ 39,999	₹ 59,999

+ Student Kit will be provided at extra cost to Platinum Student.

- \* **SILVER (Trial)** Only valid 7 DAYS or First 10 Hour's Lectures.
- \*\* **GOLD (Online)** can be converted to regular classroom (Any MOTION Center) by paying difference amount after lockdown.
- \*\*\* **PLATINUM (Online + Regular)** can be converted to regular classroom (Any MOTION Center) without any cost after lockdown.

New Batch Starting from :  
**16 & 23 September 2020**

**Zero Cost EMI Available**

**MOTION™**

H.O. : 394, Rajeev Gandhi Nagar, Kota  
www.motion.ac.in | ✉ : info@motion.ac.in